

Platts on the Net

DDE Link Set Up

Setting up a DDE Link to export data from POTN into Excel

Windows XP – Excel 2003

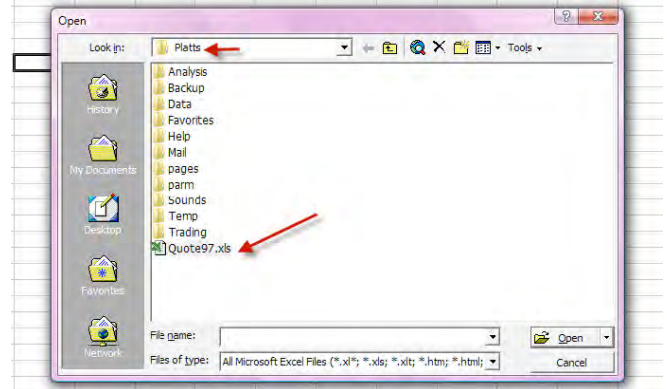
POTN has a function to export of data using a DDE link.

To set up the link:

Open Excel and then retrieve the Quotes97.xls file located in C:\Platts.

Please select the button that 'enables macros'.

The Quotes97 worksheet will be called up to the screen. Drop down 2 lines from the bottom of the text and add the path to your POTN program. Unless your setup is unique, the path will be **C:\Platts**.



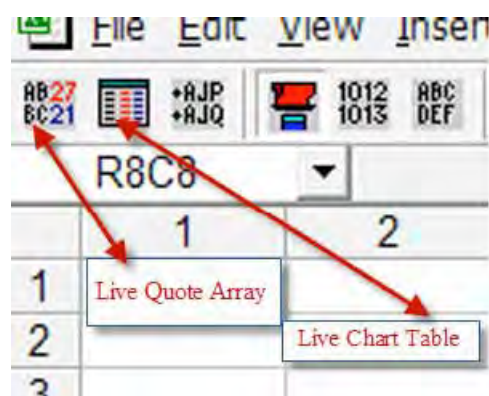
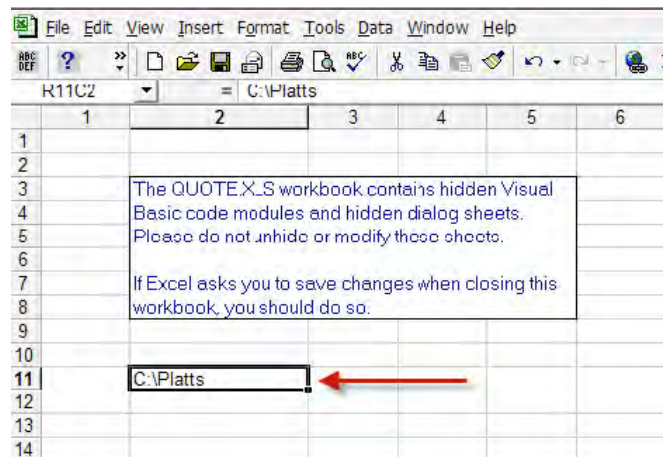
Save the Quotes97 file. In order to hide the Quotes97 file so it is not used by accident, insert a new worksheet in the file. **Insert > Worksheet**. Go back to the original sheet, using the worksheet tab at the bottom of the sheet. Once the original sheet (above) is visible, hide the sheet. **Format > Sheet > Hide**. Save Quotes97 again and then close the file.

Note: Quotes97 should not be used for calculations or import. Create new Excel files to expand your work.

Installation of the POTN DDE -Excel Tool Bar:

Select **Tools > Customize > Toolbars**. Look down the list and assure TAL Trading Tools is checked. You will note a new set of icons on the screen. This is the TAL DDE tool bar.

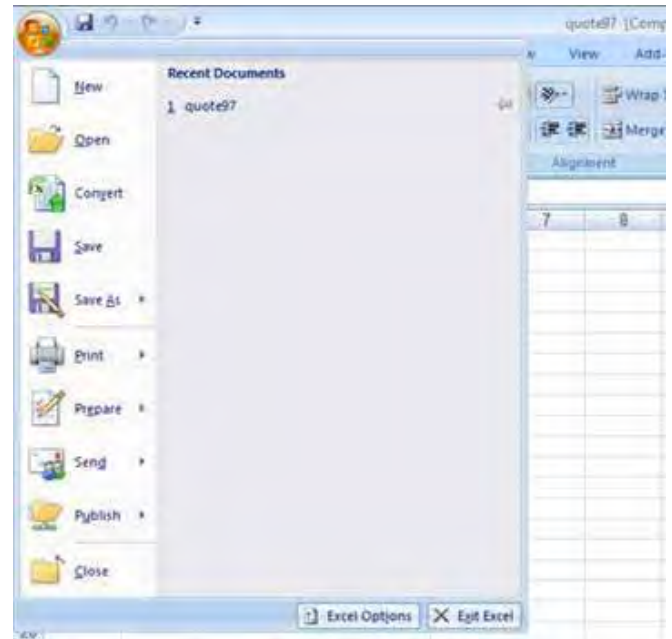
For these instructions we will use the Live Quote Array and The Live Chart functions. The icons are shown below.



Activating DDE Toolbar with Excel in Windows 7

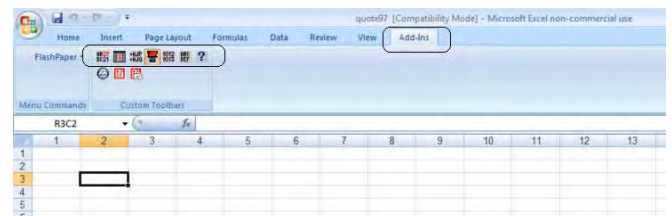
Open **Excel** and then **Excel Options > File, Options**

Click on the **Trust Center** button and then **Trust Center Settings**



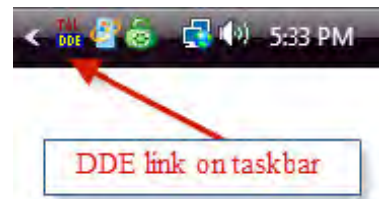
Click on the **Macro Settings** button and then **Enable all Macros**, then below to **Trust Access to VBA project object model**

Quote97.xls macro functions are found in the **Add-In** tab.



Establishing the POTN / Excel link

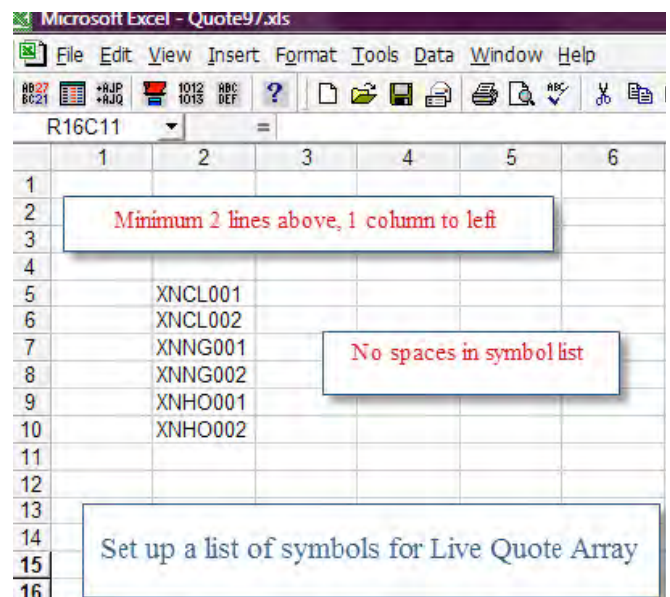
Now that the TAL tool bar is installed, the link will need to be established between POTN and Excel. In the Platts on the Net group under the Windows Program list find **TALDDE**. Click. It will now show up on the right side of your taskbar. You will be asked to enter the ID / Password to enable TALDDE and before the link drops to the taskbar. You may also want to drag a copy of this link program to your desktop for easier access.



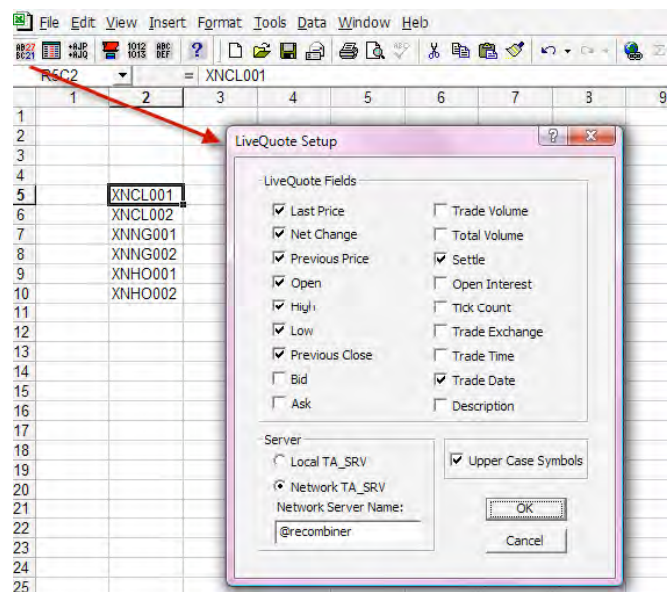
Live Quote Array

To display current values in a horizontal format use Live Quote Array. You will need to organize and input the symbols into an Excel sheet before the array is activated. Once an array is active, it cannot be edited. The array data must be deleted and reactivated. The symbol area must be contiguous with no blank lines. You also must leave at least 2 lines above and 1 column to the left of the symbol list.

When entering NYMEX symbols that begin with '/', you will need to precede the "/" with a single quote mark ('/XNCL001) to ensure Excel interprets this character as text and not a command.



Set the cursor on the top symbol and click the Live Quote Array icon in the toolbar.



Select the fields for information you would like to bring in. Not all data is available for different types of data.

	1	2	3	4	5	6	7
1							
2							
3			Price	High	Low	Date	
4							
5		XNCL001	8432	8520	8520	2/15/11	
6		XNCL002	8757	8757	8757	2/15/11	
7		XNNG001	3976	3970	3970	2/15/11	
8		XNNG002	4030	4030	4030	2/15/11	
9		XNHO001	27290	27290	27290	2/15/11	
10		XNHO002	27324	27324	27324	2/15/11	

Sample of NYMEX exchange data

	1	2	3	4	5	6
1						
2						
3						
4			High	Low	Date	
5						
6		PCAGH00	86.94	86.82	2/16/11	
7		PCAGC00	92.39	92.27	2/16/11	
8		AAQTL00	92.64	92.52	2/16/11	
9		PCAGI00	94.84	94.72	2/16/11	
10						

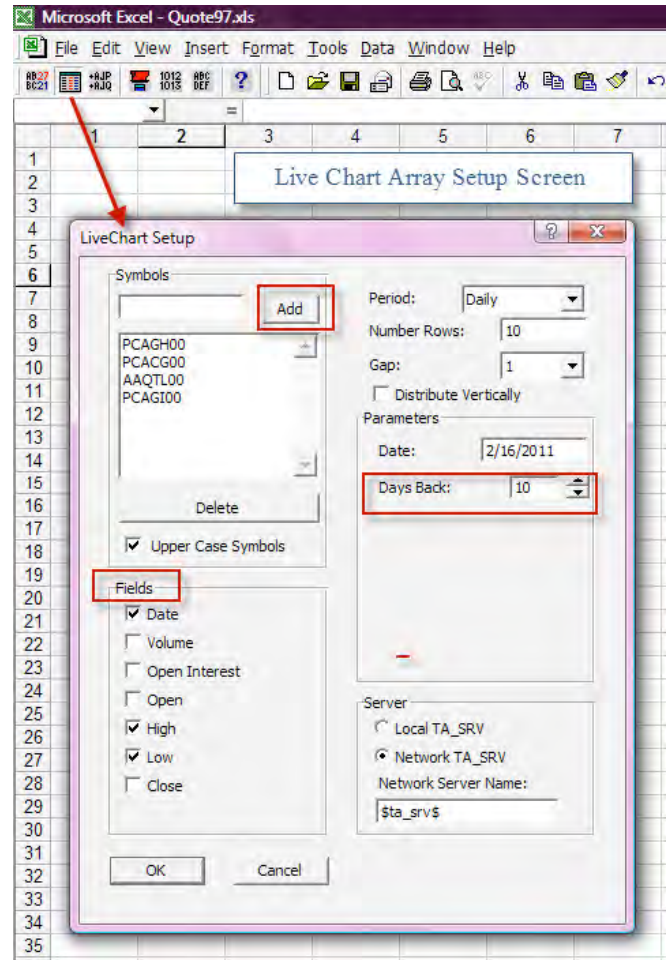
Sample of Platts Data

Live Chart Array

This function will provide a table of historic data in Excel. For Live Chart array you simply select the icon to access the Live chart Setup dialog box. You can then input one or more symbols into the setup screen. Type the symbol into the box in the upper left and click

Add to drop it into the box. Select the desired fields below. The Days Back can be adjusted to bring in as much data as required.

Note: 250 days equals approximately one (1) year.

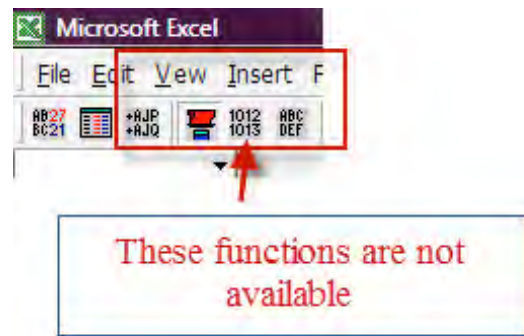


Data format using Live Chart Array:

Note: Platts will assist in establishing the DDE link and assuring it is operational. Platts cannot build worksheets for clients and can only do preliminary troubleshooting of worksheets built by clients.

Sample Data - Live Chart Array

Symbol	PCAG000	Loresis 1st MtH	Symbol	PCAG000	WTI Cracking 1st MtH	Symbol	AAQTL00	Roscoader FOB Brazil	Symbol	PCAG000	Vascones 1st MtH
Date	High	Low	Date	High	Low	Date	High	Low	Date	High	Low
2/2/11	88.47	88.20	2/2/11	80.77	80.68	2/2/11	96.77	96.05	2/2/11	85.52	85.4
2/2/11	87.01	86.89	2/2/11	80.22	80.01	2/2/11	94.71	94.50	2/2/11	84.06	83.84
2/2/11	88.90	88.62	2/2/11	81.44	81.43	2/2/11	95.71	95.71	2/2/11	84.19	84.22
2/2/11	88	88.08	2/2/11	82.76	82.73	2/2/11	95.8	94.88	2/2/11	86	84.88
2/2/11	88.21	88.09	2/2/11	88.43	88.41	2/2/11	93.78	93.84	2/2/11	86.11	85.99
2/2/11	88.96	88.48	2/2/11	88.06	88.06	2/2/11	93.81	93.48	2/2/11	85.88	85.54
2/11/11	88.48	88.58	2/11/11	85.41	85.45	2/11/11	92.98	92.88	2/11/11	84.80	84.86
2/11/11	88.53	88.47	2/11/11	84.84	84.82	2/11/11	93.24	93.12	2/11/11	85.19	85.07
2/10/11	88.42	88.5	2/10/11	84.55	84.51	2/10/11	92.32	92	2/10/11	84.22	84.1
2/10/11	88.54	88.02	2/10/11	84.99	84.97	2/10/11	92.84	92.82	2/10/11	84.84	84.72



NORTH AMERICA

New York

2 Penn Plaza, 25th Floor
New York, NY 10121-2298, USA
P: +1-800-PLATTS8 (toll-free)
P: +1-212-904-3070 (direct)

Boston

225 Franklin Street, 14th Floor
Boston, MA 02110 USA
P: +1 800-752-8878
P: +1 617-530-8300

Denver

1800 Larimer Street, Suite 2000
Denver, CO 80202, USA
P: +1-720-264-6600

Hightstown

148 Princeton-Hightstown Road
Hightstown, NJ 80021, USA
P: +1-800-PLATTS8 (toll-free)

Houston

Heritage Plaza
1111 Bagby Street, Suite 2200
Houston, TX 77002, USA
P: +1-800-PLATTS8 (toll-free)

Pittsburgh

424 South 27th Street, Suite 306
Pittsburgh, PA 15203, USA
P: +1-412-431-4370

Washington, D.C.

1200 G Street NW, Suite 1000
Washington, DC 20005, USA
P: +1-212-904-3070

LATIN AMERICA

Buenos Aires

Tte. Gral. Juan D. Perón 346, 6th Floor
(C1038AAH) Buenos Aires, Argentina
P: +54-11-4121-4810

São Paulo

Av Brigadeiro Faria Lima
201 21st floor
São Paulo – SP Brasil – 05626-100 –
Brazil P: +55-11-3818-4100

EUROPE, MIDDLE EAST AND AFRICA

London

20 Canada Square
12th Floor, Canary Wharf
London E14 5LH, UK
P: +44-20-7176-6111

Dubai

DIFC, The Gate Precinct
Building 1, Level 05
P.O. Box 506650
Dubai, UAE
P: +971-4-372-7100

Moscow

Business Centter
Mokhovaya
4/7 Vozdvizhenka Street
Building 2, 7th Floor, 125009
Moscow,
Russia
P: +7-495-783-4141

Stavanger

Øvre Holmegate 1
4006 Stavanger

ASIA-PACIFIC

Singapore

12 Marina Boulevard
#23-01 Marina Bay
Financial Centre Tower 3
Singapore 018982
P: +65-6532-2800

Beijing

Suite 1601, 16/F Tower D Beijing CITC
A6 Jianguo Menwai Avenue
Chaoyang District
Beijing 100022, China
P: +86-10-6569-2929

Hong Kong

Unit 6901, Level 69 International
Commerce Centre 1 Austin Road West
Kowloon, Hong Kong
P: +852-2841-1035

Shanghai

33/F Shanghai Plaza
138 Huaihai Road (M)
Shanghai 200021, China
P: +86-21-5110-5488

Tokyo

Marunouchi Kitaguchi Building,
28th Floor
1-6-5 Marunouchi
Tokyo 100-0005, Japan
P: +81-3-4550-8300

Melbourne

Level 45, 120 Collins Street
Melbourne
VIC 3000, Australia
P: +61-3-9631-2000